

DEPARTMENT OF THE ARMY TECHNICAL MANUAL

**DIRECT SUPPORT AND GENERAL SUPPORT MAINTENANCE
REPAIR PARTS AND SPECIAL TOOLS LISTS (INCLUDING
DEPOT MAINTENANCE REPAIR PARTS AND SPECIAL TOOLS)
ANTENNA SUPPORTS AB-105A/FRC, AB-105B/FRC
(FSN 5985-228-0225), AND AB-105C/FRC
(FSN 5985-537-3739)**

Headquarters, Department of the Army, Washington, DC
13 December 1974

Current as of 18 September 1974

	Paragraph	Page
SECTION I INTRODUCTION		
Scope	1-1	2
General	1-2	2
Explanation of columns	1-3	2
Special information	1-4	4
Location of repair parts	1-5	4
Abbreviations (Not applicable)	1-6	5
Reporting of equipment publication improvements	1-7	5
II REPAIR PARTS LIST		6
III SPECIAL TOOLS, TEST AND SUPPORT EQUIPMENT		11
IV INDEX - FEDERAL STOCK NUMBER AND REFERENCE NUMBER CROSS- REFERENCE TO FIGURE AND ITEM NUMBER		12

***This manual supersedes TM 11-5985-210-35P, 2 March 1959.**

SECTION I
INTRODUCTION

1-1. Scope

This manual lists repair parts and special tools required for the performance of direct support, general support, and depot maintenance of the AB-105A/FRC, AB-105B/FRC, and AB-105C/FRC. The PCCN for the equipment is GCRAIH for all models.

1-2. General

This repair parts and special tools list is divided into the following sections:

a. Repair Parts List - Section II. A list of repair parts authorized for the performance of maintenance at the direct support, general support, and depot level. This repair parts list is arranged in alphabetical order.

b. Special Tools, Test and Support Equipment- Section III. A list of special tools, test and support equipment authorized for the performance of maintenance at the direct support, general support, and depot level.

c. Index - Federal Stock Number and Reference Number Cross-Reference to Figure and Item Number - Section IV. A list, in ascending numerical sequence, of all Federal stock numbers appearing in the listings, followed by a list, in alphanumeric sequence, of all reference numbers appearing in the listings. Federal stock number and reference numbers are cross-referenced to each illustration figure and item number or reference designation appearance.

1-3. Explanation of Columns

The following provides an explanation of columns found in the tabular list.

a. Source, Maintenance, and Recoverability Codes (SMR).

(1) *Source code.* Indicates the manner of acquiring support items for maintenance, repair, or overhaul of end items. Source codes are:

<i>Code</i>	<i>Explanation</i>
P A -	Item procured and stocked for anticipated or known usage.
P B -	Item procured and stocked for insurance purposes because essentiality dictates that a minimum quantity be available in the supply systems.
PC —	Item procured and stocked and which otherwise would be coded PA except that it is deteriorative in nature.

<i>Code</i>	<i>Explanation</i>
P D -	Support item, excluding support equipment, procured for initial issue or outfitting and stocked only for subsequent or additional initial issues or outfittings. Not subject to automatic replenishment.
P E -	Support equipment procured and stocked for initial issue or outfitting to specified maintenance repair activities.
P F -	Support equipment which will not be stocked but which will be centrally procured on demand.
P G -	Item procured and stocked to provide for sustained support for the life of the equipment. It is applied to an item peculiar to the equipment which because of probable discontinuance or shutdown of production facilities would prove uneconomical to reproduce at a later time.
K D -	An item of depot overhaul/repair kit and purchased separately. Depot kit defined as a kit that provides items required at the time of overhaul or repair.
KF —	An item of a maintenance kit and not purchased separately. Maintenance kit defined as a kit that provides an item that can be replaced at organizational or direct support or general support levels of maintenance.
KB —	Item included in both a depot overhaul/repair kit and a maintenance kit.
MO —	Item to be manufactured or fabricated at organizational level.
MF —	Item to be manufactured or fabricated at direct support maintenance level.
MH —	Item to be manufactured or fabricated at general support maintenance level.
MD —	Item to be manufactured or fabricated at depot maintenance level.
AO —	Item to be assembled at organizational level.
AF —	Item to be assembled at direct support maintenance level.
AH —	Item to be assembled at general support maintenance level.
AD —	Item to be assembled at depot maintenance level.
XA —	Item is not procured or stocked because the requirements for the item will result in the replacement of the next higher assembly.

<i>Code</i>	<i>Explanation</i>
X B	- Item is not procured or stocked. If not available through salvage, requisition.
X C	- Installation drawing, diagram instruction sheet, field service drawing, that is identified by manufacturers' part number.
X D	- Support items can be requisitioned with justification.

NOTE

Cannibalization or salvage may be used as a source of supply for any items source coded above except those coded XA and aircraft support items as restricted by AR 700-42.

(2) **Maintenance code.** Maintenance codes are assigned to indicate the levels of maintenance authorized to USE and REPAIR support items. The maintenance codes are entered in the third and fourth positions of the Uniform SMR Code format as follows:

(a) **Use(third position).** The maintenance code entered in the third position indicates the lowest maintenance level authorized to remove, replace, and use the support item. The maintenance code entered in the third position indicates one of the following levels of maintenance.

<i>Code</i>	<i>Application/Explanation</i>
O	- Support item is removed, replaced, used at the organizational level of maintenance.
NOTE	
A code "C" may be used in this position to denote crew or operator maintenance performed within organizational maintenance.	
F	- Support item is removed, replaced, used at the direct support maintenance level.
H	- Support item is removed, replaced, used at the general support maintenance.
D	- Support items that are removed, replaced, used at depot only.

(b) **Repair (fourth position).** The maintenance code entered in the fourth position indicates whether the item is to be repaired and identifies the lowest maintenance level with the capability to perform complete repair (i.e., all authorized maintenance functions). When a maintenance code is not used a dash (-) sign is entered. For multiservice equipment/systems or when a code is entered, this position will contain one of the following maintenance codes as assigned by the service(s) that require the code:

<i>co&?</i>	<i>Application/Explanation</i>
O	- The lowest maintenance level capable of complete repair of the support item is the organizational level.

<i>Code</i>	<i>Application/Explanation</i>
F	- The lowest maintenance level capable of complete repair of the support item is direct support
H	- The lowest maintenance level capable of complete repair of the support item is general support.
D	- The lowest maintenance level capable of complete repair of the support item is the depot level.
L	- Repair restricted to designated Specialized Repair Activity.
Z	- Non-repairable. No repair is authorized.
B	- No repair is authorized. The item may be reconditioned by adjusting, lubricating, etc., at the user level. No parts or special tools are procured for the maintenance of this item.

(3) **Recoverability code.** Recoverability codes are assigned to support items to indicate the disposition action on unserviceable items. The recoverability code is entered in the fifth position of the Uniform SMR Code format as follows:

<i>Code</i>	<i>Explanation</i>
Z	- Nonrepairable item. When unserviceable, condemn and dispose at the level indicated in the first digit of the maintenance code.
O	- Repairable item. When uneconomically repairable, condemn and dispose at organizational level.
F	- Repairable item. When uneconomically repairable, condemn and dispose at the direct support level.
H	- Repairable item. When uneconomically repairable, condemn and dispose at the general support level.
D	- Repairable item. When beyond lower level repair capability, return to depot. Condemnation and disposal not authorized below depot level.
L	- Repairable item. Repair, condemnation, and disposal not authorized below depot/Specialized Repair Activity level.
A	- Item requires special handling or condemnation procedures because of specific reasons (i.e., precious metal content, high dollar value, critical material or hazardous material).

b. Federal Stock Number. Indicates the Federal stock number assigned to the item and will be used for requisitioning purposes.

NOTE

To convert a Federal stock number to a National stock number (NSN), add "00"

after the Federal Stock Classification (FSC) code (first four digits). For example, FSN 6625-00-553-0142 when converted is NSN 6625-00-553-0142.

c. Description. Indicates the Federal item name and a minimum description required to identify the item. The last line indicates the reference number followed by the applicable Federal Supply Code for Manufacturer (FSCM) in parentheses. The FSCM is used as an element in item identification to designate manufacturer or distributor or Government agency, etc., and is identified in SB 708-42.

d. Unit of Measure (U/M). Indicates the standard or basic quantity by which the listed item is used in performing the actual maintenance function. This measure is expressed by a two-character alphabetical abbreviation; e.g., ea, in, pr, etc., and is the basis used to indicate quantities and allowances in subsequent columns. When the unit of measure differs from the unit of issue, the lowest unit of issue that will satisfy the required units of measure will be requisitioned.

e. Quantity Incorporated in Unit. This column indicates the quantity of the item used in the equipment. Subsequent appearances of the same item in the same assembly are indicated by the letters "REF".

f. 30-Day DSIGS Maintenance Allowances.

NOTE

Allowances in GS column are for GS maintenance only.

(1) The repair parts indicated by asterisk entries in separate allowance columns for DS and GS represent those authorized for use at that category of maintenance to be requisitioned on an "as required" basis, until stockage is based on demand in accordance with AR 710-2.

(2) Allowance quantities are indicated in the special tool lists section for special tools, TMDE, and other support equipment.

g. 1-Year Allowances Per 100 Equipments/Contingency Planning Purposes. Column intentionally left blank.

h. Depot Maintenance Allowance Per 100 Equipments. This column indicates opposite the first appearance of each item the total quantity authorized for depot maintenance of 100 equipments.

i. Illustration. This column is divided as follows:

(1) *Figure number.* Indicates the figure number of the illustration on which the item is shown in TM 2615 and TM 11-2615A.

(2) *Item number.* Indicates the item number or reference designation used to reference the item in the illustration.

1-4. Special Information

a. Usable on codes are included in column 3. Uncoded items are applicable to all models. Identification of the usable on codes used in this publication are:

based on

BT3AB-105A/FRC
 BT4AB-105B/FRC
 BT5AB-105C/FRC

b. The basis of issue for authorized special tools, test and support equipment is the number of end items of equipment supported and the number of maintenance personnel allocated to perform the required maintenance operations.

c. The following publications pertain to the equipment and its components:

TM 11-2615	Antenna Supports AB-105A/FRC and AB-105B/FRC.
TM 11-2615A	Antenna Support AB-105C/FRC.
TM 11-5985-210-20P	Organizational Maintenance Repair Parts and Special Tools Lists and Maintenance Allocation Chart: Antenna Supports AB-105A/FRC, AB-105B/FRC, AB-105C/FRC.

1-5. Location of Repair Parts

a. This manual contains **one cross-reference index** (see IV) to be used to locate a repair part when either the Federal stock number or reference number (manufacturer's part number) is **known**. The first column in the index is prepared in numerical or alphanumeric sequence in ascending order. The reference numbers (manufacturer's part numbers) are listed immediately following the last listed Federal stock number in the index of Federal stock numbers.

b. When the Federal stock number or reference number is known, follow the procedures given in (1) and (2) below.

(1) Refer to the index of Federal stock numbers (sec IV) and locate the Federal stock number or reference number. The FSN and reference number are cross-referenced to the applicable figure and item number or reference designation.

(2) Refer to the repair parts list (sec II) and locate the figure number (col 10a) and item number or reference designation (col 10b) as noted in the FSN index.

c. When the figure and item number or reference designation are known, scrutinize columns 10a and

10b of the repair parts list (sec II) until the item is located.

d. When the FSN, reference number, figure number, item number and reference designation are not known, scrutinize column 3 of the repair parts list (sec II), which is arranged in alphabetical order.

1-6. Abbreviations

Not applicable.

1-7. Reporting of Equipment Publication Improvements

The reporting of errors, omissions, and recommendations for improving this publication by the individual user is encouraged. Reports should be submitted on DA Form 2028 (Recommended Changes to Publications and Blank Forms) and forwarded direct to Commander, US Army Electronics Command, ATTN: AMSEL-MA-CR, Fort Monmouth, NJ 07703.

(1) SMR CODE	(2) FEDERAL STOCK NUMBER	(3) DESCRIPTION REFERENCE NUMBER & MFR CODE USABLE ON CODE	(4) UNIT OF MEAS	(5) QTY INC IN UNIT	(6) 30-DAY DS MAINT ALLOWANCE			(7) 30-DAY GS MAINT ALLOWANCE			(8) 1-YR ALW PER 100 EQUIP CNTGCT	(9) DEPOT MAINT ALW PER 100 EQUIP	(10) ILLUSTRATION	
					(a)	(b)	(c)	(a)	(b)	(c)			(a)	(b)
					1-20	21-50	51-100	1-20	21-50	51-100			FIGURE NO	ITEM NO
PAOZZ	5306-206-4989	BOLT, HOOK NO-REF-DESIG STEEL, HOOK, 2- 3/8 IN LG FROM CTR LINE, 3/4 IN -10NC 2 X 1 FT 6-3/4 IN LG, THD 3 IN LG SCD27421 (80063) BT5	EA	2	*	*	*	*	*	*		3		
XDOZZ		BOLT, EYE NO-REF-DESIG 12 IN LG O/A..... (NOTE, USED IN EQUIPMENTS ON ALL ORDERS PREVIOUS TO ORDER 28607-PH-55) Z17871 (81349)	EA	2	*	*	*	*	*	*				
XDOZZ		BOLT, EYE NO-REF-DESIG THIMBLE EYE, 6- 1/4 IN LG O/A (NOTE, USED IN EQUIPMENT IN ORDERS 28607-PH-55 AND 50965-PH-57) SCD25290-2 (80063) BT5	EA	2	*	*	*	*	*	*				
PAOZZ	5340-545-8557	BOLT, EYE NO-REF-DESIG 10-13/16 IN LG... O/A (NOTE USE IN EQUIPMENT ON ORDER 28607- PH-55 AND 50965-PH-57) SCD25290-1 (80063) BT5	EA	1	*	*	*	*	*	*		3		
PAOZZ	5306-543-2351	BOLT, MACHINE NO-REF-DESIG HEX HEAD NUT 5/8 IN -11NC-2 X 1-1/4 IN LG THD 2 IN LG O/A FFB575 (81348) BT3,BT4	EA	2	*	*	*	*	*	*		3		
PAOZZ	5306-141-2870	BOLT, MACHINE NO-REF-DESIG SQ HEAD INCL HEX NUT 3/8 IN -16-NC-2 1-1/4 IN LG SCD25290-11XXXXX* BT3,BT4	EA	60	*	*	*	*	*	*		3		
PAOZZ	5306-141-2870	XX (80063) BOLT, MACHINE NO-REF-DESIG SQ HEAD, INCL HEX NUT, 3/8 IN M16-NC-2, 1-1/4 IN LG SCD25290-1XXXXX* BT5	EA	99	*	*	*	*	*	*		3		
PAOZZ	5306-579-1451	XX (80063) BOLT, MACHINE NO-REF-DESIG SQ HEAD INCL HEX NUT 3/8 IN -16NC-2 1 IN LG SCD25290-10 (80063) BT3,BT4	EA	524	*	*	*	*	*	*		3		
PAOZZ	5306-579-1451	BOLT, MACHINE NO-REF-DESIG SQ HEAD INCL HEX NUT 3/8 IN -16NC-2 1 IN LG SCD25290-10 (80063) BT5	EA	516	*	*	*	*	*	*		3		
XDOZZ		BOLT, MACHINE NO-REF-DESIG STEEL, SQ... HEAD, INCL HEX NUT, 3/4 IN-10 NC 2 X 1-1/4 IN, 2-1/4 IN LG O/A SCD25290-1XXXXX* BT5	EA	2	*	*	*	*	*	*				
XBOZZ		XX (80063) BOLT, MACHINE XXXX NO-REF-DESIG SQ..... HEAD INCL HEX NUT 3/8 IN -16-NC-2 1-1/2 IN LG (ORD STK NO.M101-8457955) SCJ25296 (80063)	EA	5										
XBOZZ		BOLT, MACHINE XXXX NO-REF-DESIG SQ HEAD INCL HEX NUT 1/2 IN -13-NC-2-1-1/4 INLG 1-3/8 IN LG O/A (ORD STK NO.M101- 8457979)	EA	12										
PAOZZ	5306-498-8385	SCJ25290 (80063) BT5 BOLT, SHOULDER NO-REF-DESIG STEEL SQ... HEAD 5/8 IN -11-NC-2 1-1/4 IN THD PORTION 6-3/4 IN NOM LG SCB25307 (80063)	EA	2	*	*	*	*	*	*		3		

SECTION II

TM 11-5985-210-34P

(1) SMR CODE	(2) FEDERAL STOCK NUMBER	(3) DESCRIPTION REFERENCE NUMBER & MFR CODE USABLE ON CODE	(4) UNIT OF MEAS	(5) QTY INC IN UNIT	(6) 30-DAY DS MAINT ALLOWANCE			(7) 30-DAY GS MAINT ALLOWANCE			(8) 1 YR ALW PER 100 EQUIP CNTGCT	(9) DEPOT MAINT ALW PER 100 EQUIP	(10) ILLUSTRATION	
					(a)	(b)	(c)	(a)	(b)	(c)			(a)	(b)
					1-20	21-50	51-100	1-20	21-50	51-100			FIGURE NO	ITEM NO
		CONTINUED												
PAFZZ	5970-356-0574	28607-PH-55 AND 50965-PH-57 SCC25336-4 (80063) BT5 INSULATOR, STRAIN NO-REF-DESIG..... RECTANGULAR SHAPE 3-1/4 IN LG O/A (NOTE USE IN EQUIPMENTS ON ALL ORDERS PREVIOUS TO ORDER 38139-PH-53) MODIFIED (74368)	EA	10	*	*	*	*	*	*		3		
XDFZZ		INSULATOR, STRAIN NO-REF-DESIG 5-1/4 IN. LG O/A (NOTE USED IN ALL EQUIPMENTS ON ALL ORDERS PREVIOUS TO ORDER 38139-PH-53) MODIFIED (74368)	EA	5	*	*	*	*	*	*				
XDOZZ		NUT, PLAIN HEXAGON NO-REF-DESIG 5/8 IN - INCL 2 1-1/16 IN ACROSS FLATS (ORD STK NO. H101-8458082)	EA	2	*	*	*	*	*	*				
PAFZZ	5315-839-5822	SCJ25290-15 (80063) PIN, COILER NO-REF-DESIG 1/8 IN DIA X 1. IN LG 100 PINS PER BOX	EA	2	*	*	*	*	*	*		3		
XDOZZ		FFP38668 (81348) ROD, ANCHOR J2 TURNBUCKLE..... TYPE C/G 6 IN TURNBUCKLE W/7 IN LG THIMBLE EYE ON ONE END AND 6 FT 5 IN ROD ON OTHER END 7 FT LG O/A	EA	2	*	*	*	*	*	*			2 32	
PAOZZ	4030-281-0102	ESE32736 (80063) BT3, BT4 ROD, ANCHOR J2 TURNBUCKLE..... TYPE C/G 6 FT 5 IN LG ANCHOR ROD, TURNBUCKLE AND EYE BOLT 7 FT LG O/A	EA	2	*	*	*	*	*	*		3	2 32	
PAOZZ	5975-305-5755	SCJ25290-2 (80063) BT5 ROD, ANCHOR ASSEMBLY TAI (NOTE USED ON ORDERS NO. 28607-PH-55 AND 50965-PH-57 ONLY)	EA	1	*	*	*	*	*	*		3	TAI	
PAOZZ	4030-227-1737	SCJ25290-1 (80063) BT5 SHACKLE NO-REF-DESIG ANCHOR TYPE U..... SHAPE 4 IN LG X 2-1/4 IN W 9/16 DIA STOCK	EA	1	*	*	*	*	*	*		3	18	
XDOZZ		6799 (90190) BT3, BT4 SHACKLE NO-REF-DESIG ANCHOR TYPE U..... SHAPE 2-1/4 IN LG X 1-1/2 IN W 5/16 IN DIA STOCK (NOTE USED IN ALL EQUIPMENTS ON ALL UNDER PREVIOUS TO ORDER 28607-PH- 5209-5-16 (90190)	EA	2	*	*	*	*	*	*			18	
PAOZZ	1630-524-0141	SHACKLE, ANCHOR NO-REF-DESIG SHOULDER... EYE HEAD TYPE 1 END THD (NOTE USED IN EQUIPMENT ON ORDERS 28607-PH-55 AND 50965- PH-57)	EA	2	*	*	*	*	*	*		3	18	
PAOZZ	4030-149-5574	SCC25336-1 (80063) BT5 SHACKLE NO-REF-DESIG TO ATTACH GUY TO... ANCHOR ROD FOR 6/8 IN DIA ROPE	EA	1	*	*	*	*	*	*		3	18	
XDFZZ		SCC25335-1 (80063) TERMINAL, LUG NO-REF-DESIG RD TONGUE..... TYPE SQUELZE GRIP (NOTE USED IN EQUIPMENTS ON ORDER 28607-PH-55 AND 50965- CONTINUED	EA	2	*	*	*	*	*	*			21	

SECTION II

TM 11-5985-210-34P

(1) SMR CODE	(2) FEDERAL STOCK NUMBER	(3) DESCRIPTION REFERENCE NUMBER & MFR CODE USABLE ON CODE		(4) UNIT OF MEAS	(5) QTY INC IN UNIT	(6) 30-DAY D5 MAINT ALLOWANCE			(7) 30-DAY G5 MAINT ALLOWANCE			(8) 1-YR ALW PER 100 EQUIP CNTGCT	(9) DEPOT MAINT ALW PER 100 EQUIP	(10) ILLUSTRATION		
						(a)	(b)	(c)	(a)	(b)	(c)			(a)	(b)	
						1-20	21-50	51-100	1-20	21-50	51-100			FIGURE NO	ITEM NO	
		CONTINUED														
PAFZZ	5940-549-8075	PH-571 SCJ25290-5 (80063)	BT5	EA	2	*	*	*	*	*	*		5	21		
PAFZZ	4030-498-9071	MINAL, LUG NO-REF-DESIG 1-7/16 IN LG. 72 IN W (NOTE USED IN EQUIPMENTS ON ORDERS PREVIOUS TO ORDER 28607-PH-55) 401 (59730)		EA	2	*	*	*	*	*	*		3	18		
XDFZZ		IMBLE PF43 NO-REF-DESIG 2-3/8 IN LG X. 1/4 IN THK X 7/8 IN ID (NOTE USE IN EQUIPMENTS ON ALL ORDERS PREVIOUS TO ORDER 507-PH-55) 93 (90190)		EA	1	*	*	*	*	*	*		3	18		
XDHZZ		IMBLE PF-44 NO-REF-DESIG 3 IN LG X 1- 8 IN W (NOTE USED IN EQUIPMENTS ON ALL ORDERS PREVIOUS TO ORDER 28607-PH-55) 94 (90190)		EA	2				*	*	*					
PAHZZ	4030-270-8708	IMBLE, ROPE NO-REF-DESIG SPLIT OVAL .. R 5/16 IN DIA WIRE ROPE (NOTE USED IN EQUIPMENTS ON ORDER 28607-PH-55 AND 50965- -57) C25336-2 (80063)	BT3, BT4	EA	1				*	*	*		3			
PAOZZ	5340-194-9864	IMBLE, ROPE NO-REF-DESIG SPLIT OVAL .. R 5/8 IN DIA WIRE ROPE (NOTE USED IN EQUIPMENTS ON ORDER 28607-PH-55 AND 50965- -57) C25335-2 (80063)	BT5	EA	1	*	*	*	*	*	*		3	2		
PAHZZ	5340-990-9920	RNBUCKLE NO-REF-DESIG OPEN BUCKLE..... PE 14-1/2 IN LG O/A 12 IN TAKE UP NOTE USED IN EQUIPMENTS ON ALL ORDERS PREVIOUS TO ORDER 28607-PH-55) 184 (78998)		EA	2				*	*	*		3	2	43	
PAHZZ	5340-545-8557	RNBUCKLE 43 PIPE BUCKLE TYPE, 7-1/4. LG W/LOCKNUTS, 6 IN TAKE UP, (NOTE, USE EQUIPMENTS ON ORDERS 28607-PH-55 AND 965-PH-57) D25290-2 (80063)	BT5	EA	1				*	*	*		3			
XDFZZ		RNBUCKLE NO-REF-DESIG PIPE BUCKLE..... PE 14-1/2 IN LG W/LOCKNUTS 12 IN TAKE UP (NOTE USE IN EQUIPMENT ON ORDERS 28607-PH-55 AND 50965-PH-57) J25290-1 (80063)	BT5	EA	2	*	*	*	*	*	*					
XDFZZ		SHEK, FLAT NO-REF-DESIG RD 3/8 IN..... LT SIZE 1 IN OD X 5/64 IN THK 15795-215 (80063)	BT5	EA	2	*	*	*	*	*	*					
XDFZZ		SHEK, FLAT NO-REF-DESIG RC FOR 3/4 IN A BOLT 2 IN OD X 5/32 IN THK J25290-27 (80063)	BT5	EA	2	*	*	*	*	*	*					
PAFZZ	5310-194-0021	SHEK, LUCK NO-REF-DESIG SPLIT 0.255.. ID X 1/2 IN OD X 0.062 IN THK UT (74326)	BT3, BT4	EA	695	*	*	*	*	*	*		5			
		SHEK, LUCK NO-REF-DESIG SPLIT 0.406 IN ID X 0.036 IN OD X 0.094 IN THK SA (60289)	BT3, BT4													

INDEX - FEDERAL STOCK NUMBER AND REFERENCE NUMBER
CROSS-REFERENCE TO FIGURE AND ITEM NUMBER

STOCK NUMBER	FIGURE NO.	ITEM NO.	STOCK NUMBER	FIGURE NO.	ITEM NO.
1630-524-0141	18				
4030-149-5574	18				
4030-227-1737	18				
4030-243-4438			5315-839-5822		
4030-243-4441			5340-194-9804	2	
			5340-545-8557		
4030-270-8708			5340-990-9920	2	43
4030-281-0102	2	32			
4030-285-6454	20		5940-549-8075	21	
4030-498-8071	18				
4030-634-8589	20		5970-305-6124		
4030-864-9036			5970-356-0574		
5306-141-2870					
5306-206-4989					
5306-498-8385	8		5975-193-6794	2	WR1
5306-543-2351					
5306-579-1451			5975-296-1842	2	WR2
			5975-305-5755		TA1
5310-052-6454					
5310-194-0021			6145-170-6467		

REFERENCE NO.	MFR CODE	FIG. NO.	ITEM NO.	REFERENCE NO.	MFR CODE	FIG. NO.	ITEM NO.
ESE32736	80063	2	32	SCD25290-1	80063		TA1
E1184	78998	2		SCD25290-1XXXXXXX	80063		
FFB571	81348			SCD25290-10	80063		
FF8575	81348			SCD25290-11XXXXXXX	80063		
FFC450-1-1	81348			SCD25290-15	80063		
FFC450-111	81348	20		SCD25290-2	80063		
FFP3866B	81348			SCD25290-2	80063	2	32
FFW84	81348			SCD25290-2	80063	2	43
G209-5-16	90190	18		SCD25290-25	80063		
MS15795-215	80063			SCD25290-27	80063		
MS16842-4	96906			SCD25290-5	80063	21	
PE5A	66289			SCD27421	80063		
SCB176514	80063			W3314-1	81349		
SCB25307	80063	8		W3861BC	81349		
SCC25335	80063	2	WR1	Z17671	81349		
SCC25335-1	80063	18		Z4272	80063		
SCC25335-2	80063			55401	80063	21	
SCC25335-4	80063			450T	74308		
SCC25335-7	80063	20		002MODIFIED	74308		
SCC25336	80063	2	WR2	610MODIFIED	90190	18	
SCC25336-1	80063	18		6799	90190		
SCC25336-2	80063			7461	90190		
SCC25336-4	80063			7593	90190	18	
SCD25290	80063			7594	90190	18	
SCD25290-1	80063			9491	90190		

By Order of the Secretary of the Army:

FRED C. WEYAND
General, United States Army
Chief of Staff

Official:
VERNE L. BOWERS
Major General, United States Army
The Adjutant General

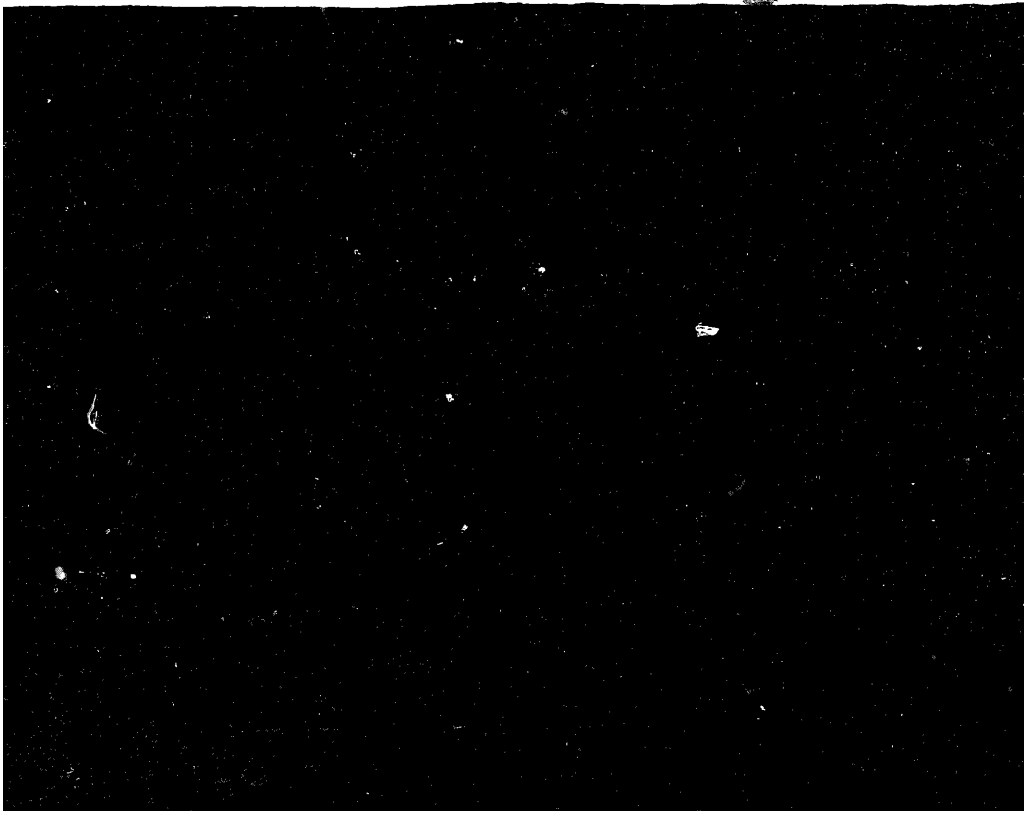
Distribution:

Active Army:

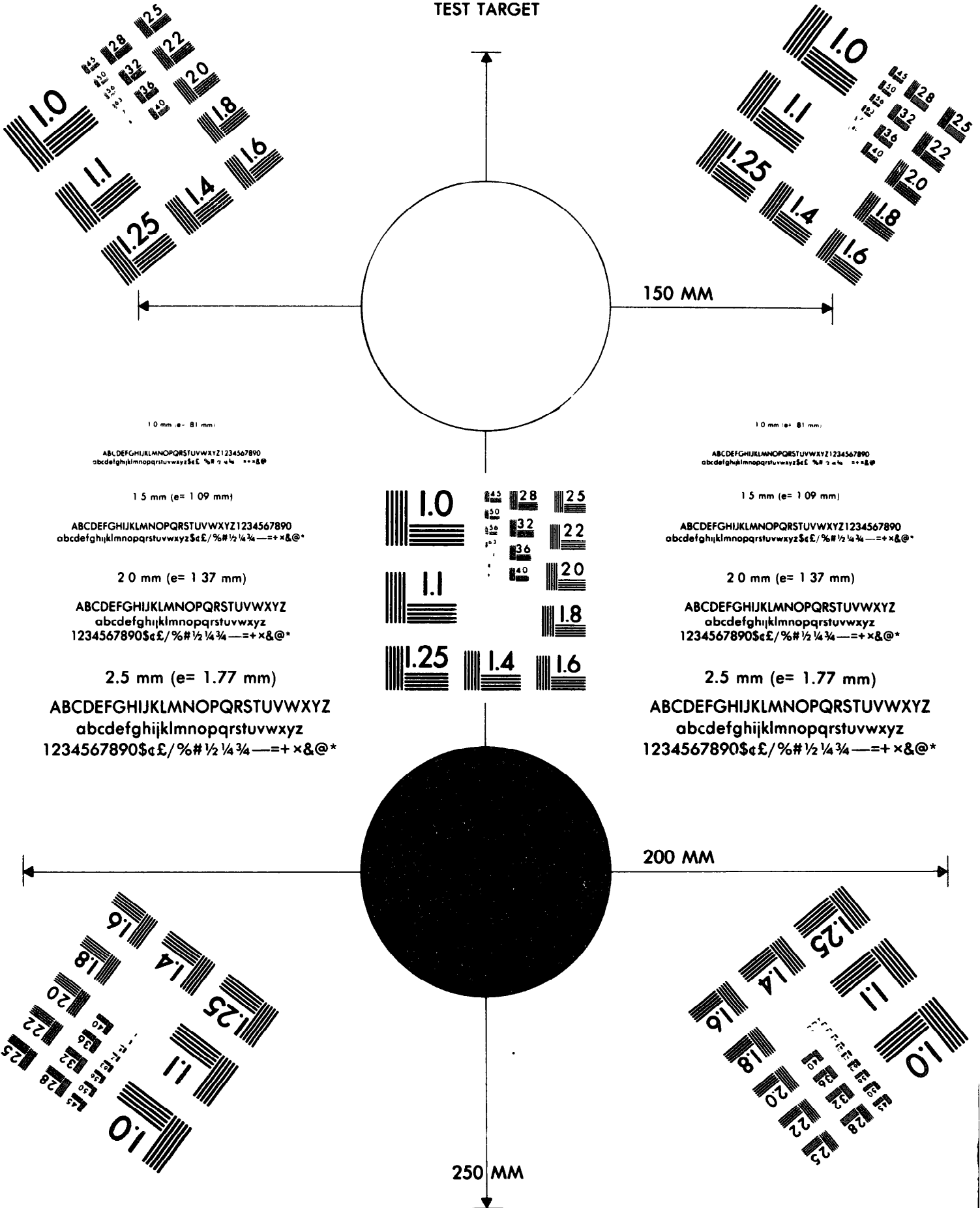
- USASA (2)
- CNGB (1)
- Dir of Trans (1)
- COE (1)
- TSG (1)
- USAARENBD (1)
- USAMB (10)
- AMC (1)
- TRADOC (2)
- ARADCOM (2)
- ARADCOM Rgn (2)
- OS Maj Comd (4)
- LOGCOMDS (3)
- MICOM (2)
- TECOM (2)
- USACC (4)
- MDW (1)
- Armies (2)
- Corps (2)
- HISA (Ft Monmouth) (18)
- Svc Colleges (1)
- USASESS (5)
- USAADS (2)
- USAFAS (2)
- USAARMS (2)
- USAIS (2)
- USAES (2)
- USAINTCS (3)
- WRAMC (1)
- ATS (1)
- Fort Gordon (10)
- Fort Huachuca (10)
- WSMR (1)

- Fort Carson (5)
- Ft Richardson (ECOM Ofc) (2)
- Army Dep (1) except
 - LBAD (14)
 - SAAD (30)
 - TOAD (14)
 - ATAD (10)
- USA Dep (2)
- Sig Sec USA Dep (2)
- Sig Dep (2)
- Sig FLDMS (1)
- USAERDAA (1)
- USAERDAW (1)
- MAAG (1)
- USARMIS (1)
- USACC Telecomm Cen (1)
- USACC-CONUS (1)
- USACC-Europe (1)
- USACC-Pacific (1)
- USACC-South (1)
- USASTRATCOM-T (1)
- Units org under fol TOE
 - (1 copy each unit):
 - 11-57
 - 11-85
 - 11-97
 - 11-98
 - 11-117
 - 11-127
 - 11-302
 - 11-500(AA-AC)
 - 29-134
 - 29-136

NG: None.
USAR: None.
For explanation of abbreviations used, see AR 310-50.



MICROFORM
TEST TARGET



1.0 mm (e = 81 mm)

ABCDEFGHIJKLMNQRSTUWXYZ1234567890
abcdefghijklmnopqrstuvwxyz\$%# 1/2 1/4 3/4 — = + x & @ *

1.5 mm (e = 1.09 mm)

ABCDEFGHIJKLMNQRSTUWXYZ1234567890
abcdefghijklmnopqrstuvwxyz\$%# 1/2 1/4 3/4 — = + x & @ *

2.0 mm (e = 1.37 mm)

ABCDEFGHIJKLMNQRSTUWXYZ
abcdefghijklmnopqrstuvwxyz
1234567890\$%# 1/2 1/4 3/4 — = + x & @ *

2.5 mm (e = 1.77 mm)

ABCDEFGHIJKLMNQRSTUWXYZ
abcdefghijklmnopqrstuvwxyz
1234567890\$%# 1/2 1/4 3/4 — = + x & @ *

1.0 mm (e = 81 mm)

ABCDEFGHIJKLMNQRSTUWXYZ1234567890
abcdefghijklmnopqrstuvwxyz\$%# 1/2 1/4 3/4 — = + x & @ *

1.5 mm (e = 1.09 mm)

ABCDEFGHIJKLMNQRSTUWXYZ1234567890
abcdefghijklmnopqrstuvwxyz\$%# 1/2 1/4 3/4 — = + x & @ *

2.0 mm (e = 1.37 mm)

ABCDEFGHIJKLMNQRSTUWXYZ
abcdefghijklmnopqrstuvwxyz
1234567890\$%# 1/2 1/4 3/4 — = + x & @ *

2.5 mm (e = 1.77 mm)

ABCDEFGHIJKLMNQRSTUWXYZ
abcdefghijklmnopqrstuvwxyz
1234567890\$%# 1/2 1/4 3/4 — = + x & @ *

200 MM

250 MM

END

9-18-83

DATE

